

# Introducing a Safer Drug Consumption Facility for Glasgow

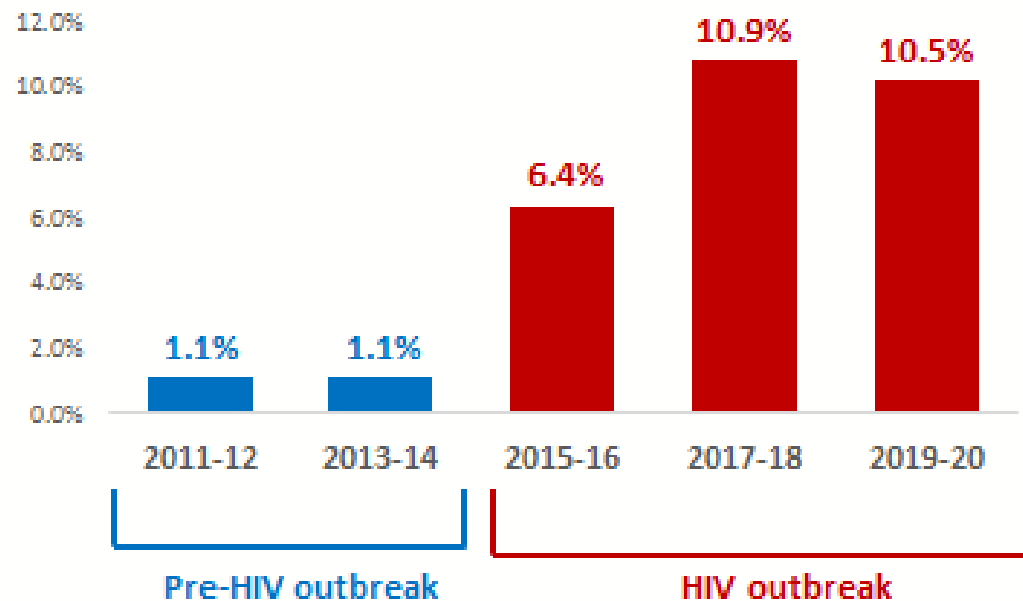
---

Glasgow City Health and Social Care Partnership  
Glasgow City Alcohol and Drug Partnership

**OFFICIAL**

- Background
- Setting the Scene – Glasgow in 2024
- The Legal Framework
- The Glasgow SDCF
- Implementation Plans

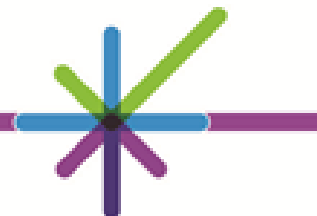
## Rise in HIV prevalence in the population of PWID in Glasgow City



- 10-fold rise in prevalence of HIV infection among PWID observed in Glasgow city between 2013 and 2017
- Plateauing in prevalence of HIV infection among PWID between 2017 and 2019 (i.e. pre-COVID)

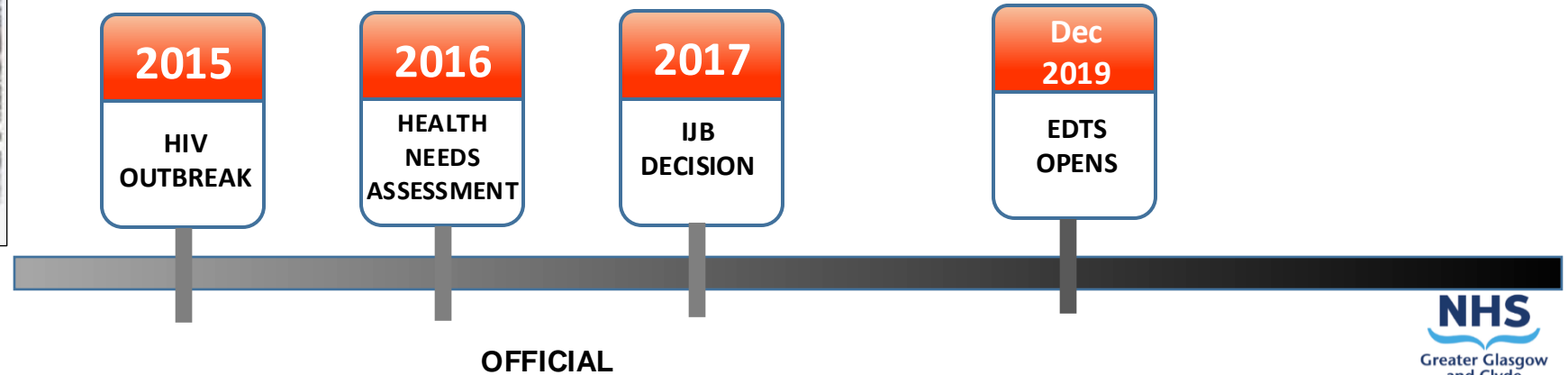
Source: Needle Exchange Surveillance Initiative

OFFICIAL





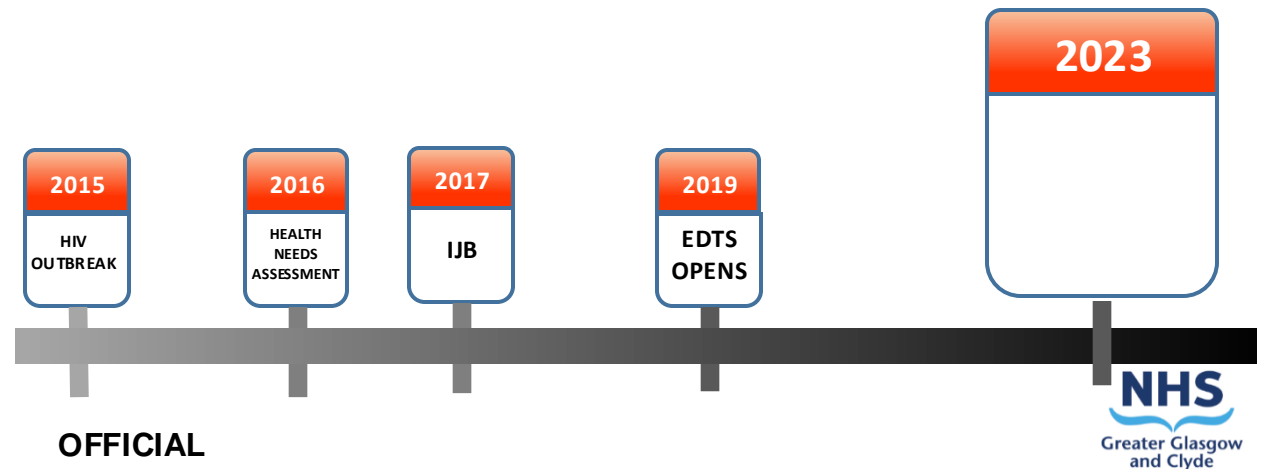
Lord Advocate declines  
request for Legal  
Framework.  
2018



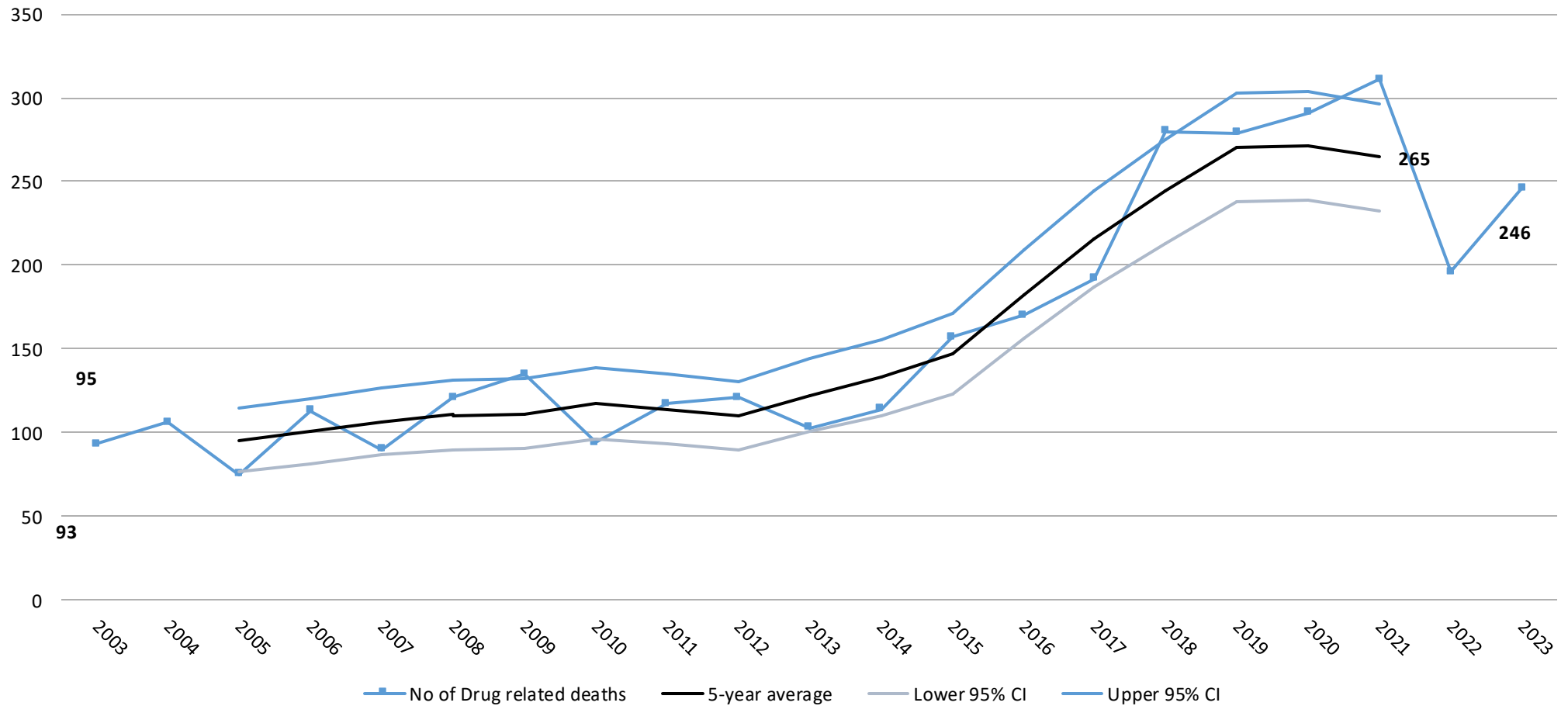


# Glasgow 2023

- Injecting 'away from home' increasing
- Cocaine Injection > prevalence
- Public Health Issues:
  - Discarded needles and paraphernalia
  - Bodily fluids



### Drug-related deaths in Glasgow City 2003-2023



**R** News ▸ Politics ▸ Drugs


## Lord Advocate suggests fresh look at drug rooms in Scotland

Dorothy Bain spoke in the context of Scotland having an appalling record on drugs death

SHARE     Comments

By **Paul Hutcheon** Political Editor, Daily Record  
12:11, 3 NOV 2021 | **UPDATED** 16:46, 3 NOV 2021



 Privacy

**Lord Advocate Dorothy Bain QC hinted at a change to drugs consumption rooms** (Image: UGC MSR)

Scotland's new Lord Advocate has suggested she could consider a "precise" and "specific" proposal for a drugs consumption room in Scotland.

*I would be prepared to publish a statement of prosecution policy to the effect that it would not be in the public interest to prosecute users of that facility in terms of section 5(2) of the Misuse of Drugs Act 1971 for simple possession offences committed within the confines of the facility.*

Dorothy Bain KC, Lord Advocate  
11<sup>th</sup> September 2023

# Lord Advocate - September 2023

- SoPP- No change to Misuse of Drugs Act 1971
- Near public injecting sites
- Co-located with other relevant services
- Community Engagement
- Independent Evaluation





# What is a Safer Drug Consumption Facility?

OFFICIAL

# What is a SDCF?

Hygienic environments where illicit drugs - purchased off the premises - can be consumed under clinical supervision.



Vancouver



Sydney

- Sterile injecting equipment
- Advice on injecting techniques
  - Overdose assistance
- On-site health & social service

OFFICIAL

Evidence elsewhere tells us that SDCFs;

## Service Users

- Engage people who use drugs in vicinity
- Reduce drug-related health harms
- Reduce infectious disease transmission
- Reduced risk of fatal overdose
- Increase access to treatment, care and support services
- Reduce stigma

## Communities and Society

- Reduce drug related litter/visible drug use
- Improve social amenity
- Are cost-effective- e.g. reductions in acute service usage
- Don't have a "honeypot" effect
- No increase in crime within the vicinity



<https://youtu.be/m3tZPxKoqPM>

**OFFICIAL**



# HARM REDUCTION SERVICES

- Heroin Assisted Treatment
- Non-Fatal Overdose Response
- WAND (Wound Care, Assessment of Injecting Risk, Naloxone, Dry Blood Spot Testing)
- Specialist Inpatient Wards, Residential Crisis and Stabilisation Services
- Availability of same day treatment, choice of treatment, full range of harm reduction interventions, and trauma-informed psychosocial supports
- Intelligence Hub
  
- SAFER DRUG CONSUMPTION FACILITY
- DRUG CHECKING SERVICE

# Glasgow SDCF

- Service will be situated within Hunter Street Health and Care Centre.
- Operating hours of 9am to 9pm, 365 days a year.
- Service will be managed within the HSCP Alcohol & Drugs Partnership.
- Co-located with Drug Treatment, BBV, SRH and GP services.
- Ability for individuals to access the service anonymously.
- Removes previous proposal for inhalation rooms.
- Currently developing Drug Checking Service with Scottish Government, for the ability to test drugs prior to injecting. \*This is not a pre-requisite for individuals to access our service.

**OFFICIAL**

# Glasgow SDCF

## Staffing Model:

- Operational Manager
  - Nurse Team Leader & Social Work Team Leader
  - Admin Staff
  - Clinical Nurse Specialists & Addiction Nurses & Health Care Support Workers
  - Social Workers & Harm Reduction Workers
  - Clinical Psychology
  - Medical Clinical Lead
- 
- Co-located- EDTS / CNS / GP Services / BBV / SRH / Acute





## Existing EDTS Setup – Hunter Street



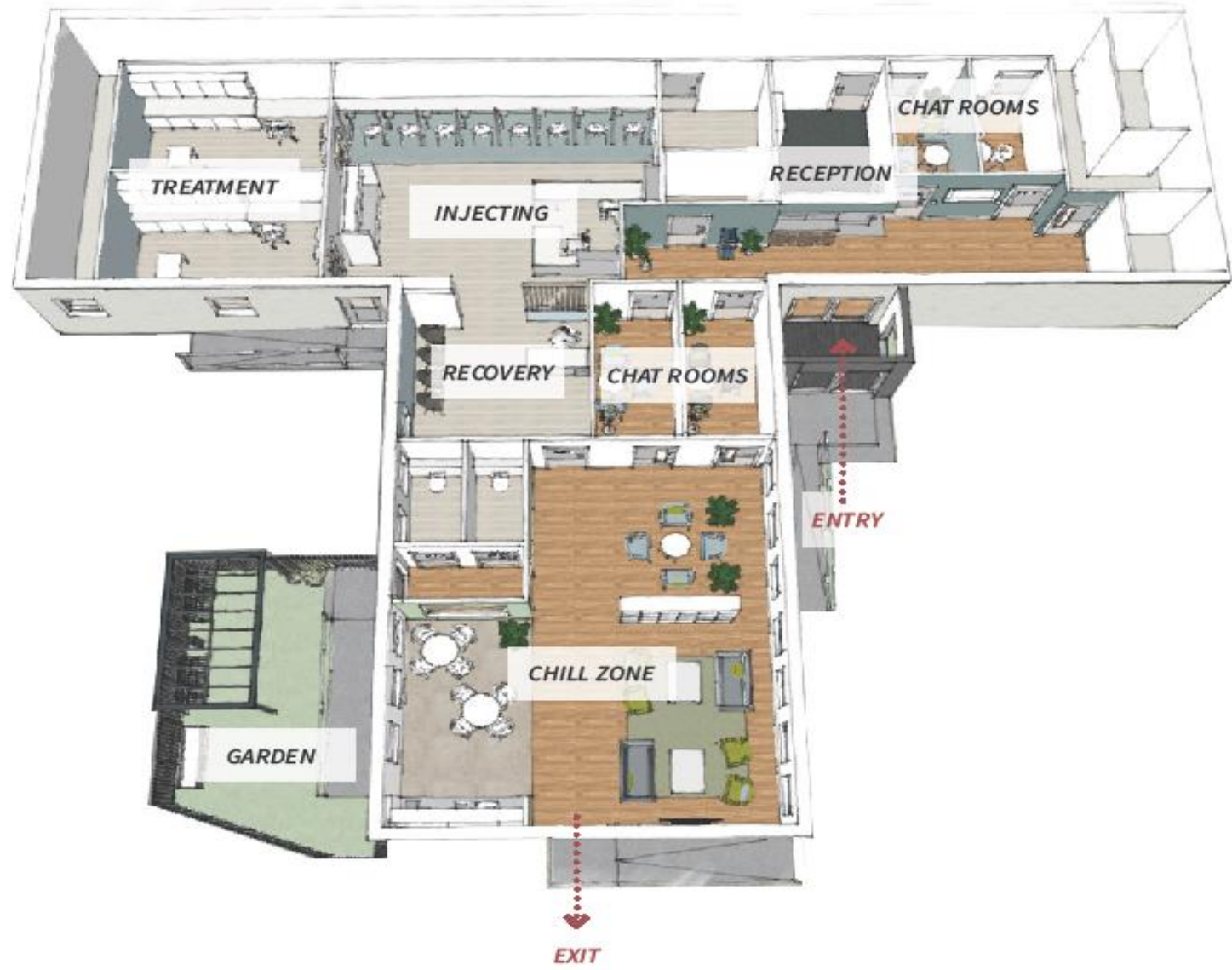













# Further Information

FAQ Document

HSCP SDCF Webpage- [www.glasgowcity.hscp.scot/sdcf](http://www.glasgowcity.hscp.scot/sdcf)



## Glasgow City's Safer Drug Consumption Facility

Glasgow City Health and Social Care Partnership is planning to establish a Safer Drug Consumption Facility (SDCF) in Glasgow City Centre.

### Frequently Asked Questions

**What is a Safer Drug Consumption Facility (SDCF)?**

Safer drug consumption facilities (SDCFs) are supervised and controlled healthcare settings where people can consume drugs, obtained elsewhere, in the presence of trained health professionals, in clean and hygienic environments reducing the risk of overdose and infectious diseases whilst offering support and access to healthcare services.

They offer a compassionate, person-centred service which focuses on reducing the harms associated with injecting drug use and helps people access appropriate services to meet their needs. By doing so, they are able to reach an extremely vulnerable group who often do not engage with our existing services.

Safer Drug Consumption Facilities are also known as Supervised Drug Consumption Rooms / Facilities (SDCR or SDCF), Safe / Supervised Injection Facilities (SIF), Safer Consumption Rooms (SCR), Overdose Prevention Sites (OPS), Drug Consumption Rooms (DCR) and Medically Supervised Injecting Rooms (MISR).

**Why are these services being proposed for Glasgow?**

Following an outbreak of HIV in people who inject drugs in public places, a health needs assessment 'Taking Away the Chaos' was undertaken in Glasgow city centre. This found there are approximately 400 to 500 people injecting drugs in public places in Glasgow city centre on a regular basis. Injecting in public spaces increases the risk of infection and other drug related harms, and also causes a risk to the public from discarded injecting equipment and needles.

The report made a number of recommendations, including the introduction of a SDCF which a large body of high-quality research suggests will help reduce the health and social consequences of public injecting in the city centre. These potential benefits are described in more detail below (See 'What are the expected benefits of these services?')


Glasgow city centre is the focus of the proposal since local evidence tells us that this area has a high concentration of people who inject drugs in public places, especially in the south-eastern area. Locating the facility in the area where public injecting is already taking place will maximise uptake by the target population.

## Safer Drug Consumption Facility



Glasgow City Health and Social Care Partnership (HSCP) is working with NHS Greater Glasgow and Clyde (NHSGGC) and other partners to develop a pilot Safer Drug Consumption Facility (SDCF). This will be the first Safer Drug Consumption Facility in Scotland and the United Kingdom.

SDCFs are supervised healthcare settings where people can inject drugs, obtained elsewhere in the presence of trained health professionals in clean, hygienic environments. The service aims to reduce the negative impact that injecting outdoors has on local residents, communities and businesses, reduce the harms associated with injecting drugs on individuals and support people to access help to improve their lives.

The SDCF is due to open in 2024 and will be the first of its kind in the UK.



**Stories from service users, families and professionals**

 <p><b>Service user information</b></p>	 <p><b>Families information</b></p>	 <p><b>Local communities information</b></p>
 <p><b>Background information</b></p>	 <p><b>Engagement information</b></p>	 <p><b>Frequently asked questions</b></p>

<https://youtu.be/DDrjQNX5-Jw>

OFFICIAL



# Thank You

---

[www.glasgowcity.hscp.scot/sdcf](http://www.glasgowcity.hscp.scot/sdcf)

OFFICIAL